

# CLINICAL OUTCOMES DURING CUSTOMIZE: A HYBRID III IMPLEMENTATION-EFFECTIVENESS STUDY FOCUSED ON IMPLEMENTATION OF CABOTEGRAVIR PLUS RILPIVIRINE (CAB + RPV) LA IN US HEALTHCARE SETTINGS

Gary Sinclair,<sup>1</sup> Paul Benson,<sup>2</sup> Leandro Mena,<sup>3</sup> Maggie Czarnogorski,<sup>4</sup> Cindy Garris,<sup>4</sup> Marybeth Dalessandro,<sup>5</sup> Sterling Wu,<sup>6</sup> Deanna Merrill,<sup>4</sup> Toyin Nwafor,<sup>4</sup> Ronald D'Amico<sup>4</sup>

<sup>1</sup>AIDS Arms, Inc, Dallas, TX, USA; <sup>2</sup>Be Well Medical Center, Berkley, MI, USA; <sup>3</sup>University of Mississippi Medical Center, Jackson, MS, USA; <sup>4</sup>ViiV Healthcare, Research Triangle Park, NC, USA; <sup>5</sup>ViiV Healthcare, Collegetown, PA, USA; <sup>6</sup>GlaxoSmithKline, Collegetown, PA, USA

## Introduction

- Cabotegravir (CAB) and rilpivirine (RPV) is the first complete long-acting (LA) injectable regimen recommended by treatment guidelines for the maintenance of virologic suppression in people living with HIV-1<sup>1-3</sup>
- Limited data exist evaluating the feasibility, acceptability, and resource requirements of implementing this novel healthcare provider-administered therapy and subsequent clinical outcomes in US healthcare settings
- This analysis reports key efficacy, safety, and adherence outcomes after 12 months of CAB + RPV LA implementation in CUSTOMIZE

## Methods

- CUSTOMIZE is a phase IIIb, single-arm, hybrid III implementation-effectiveness study at 8 US clinical sites that enrolled virologically suppressed participants with HIV-1 infection
  - Clinics were located in Sacramento, CA; Kansas City, MO; Dallas, TX; Detroit, MI; Atlanta, GA; Jackson, MS; Jacksonville, FL; and Miami, FL
- Key secondary endpoints evaluated efficacy and safety measures of once-monthly CAB + RPV LA, adherence to injection dosing schedule, and length of clinic visit
  - Plasma HIV-1 RNA and adverse event (AE) assessments occurred at Months 1, 2, 4, 6, 8, 10, and 12
  - Injection site reactions (ISRs) were documented at each monthly visit
  - Total time spent in clinic from arrival to departure was recorded at Months 1, 5, and 11
- CAB + RPV therapy began with a 1-month oral lead-in of CAB 30 mg + RPV 25 mg to assess individual tolerability before transitioning to monthly CAB 400 mg + RPV 600 mg LA intramuscular injections
  - Injections were scheduled with a -7-day dosing window around the target injection visit date at Months 2 and 3 (second and third injections) and a ±7-day dosing window starting at Month 4 (fourth injection)

## Results

- Of 115 participants enrolled, 109 (95%) received ≥1 CAB + RPV LA injection, and 102 (89%) completed through Month 12
  - 6 participants withdrew before receiving a CAB + RPV LA injection because of protocol deviation (n=3), AE (n=1), physician decision (n=1), or withdrawn consent (n=1)
- 86% of participants were men, 57% were White, 37% were Black or African American, and median (range) body mass index was 27 (17-55) kg/m<sup>2</sup> (Table 1)

Table 1. Baseline Demographics

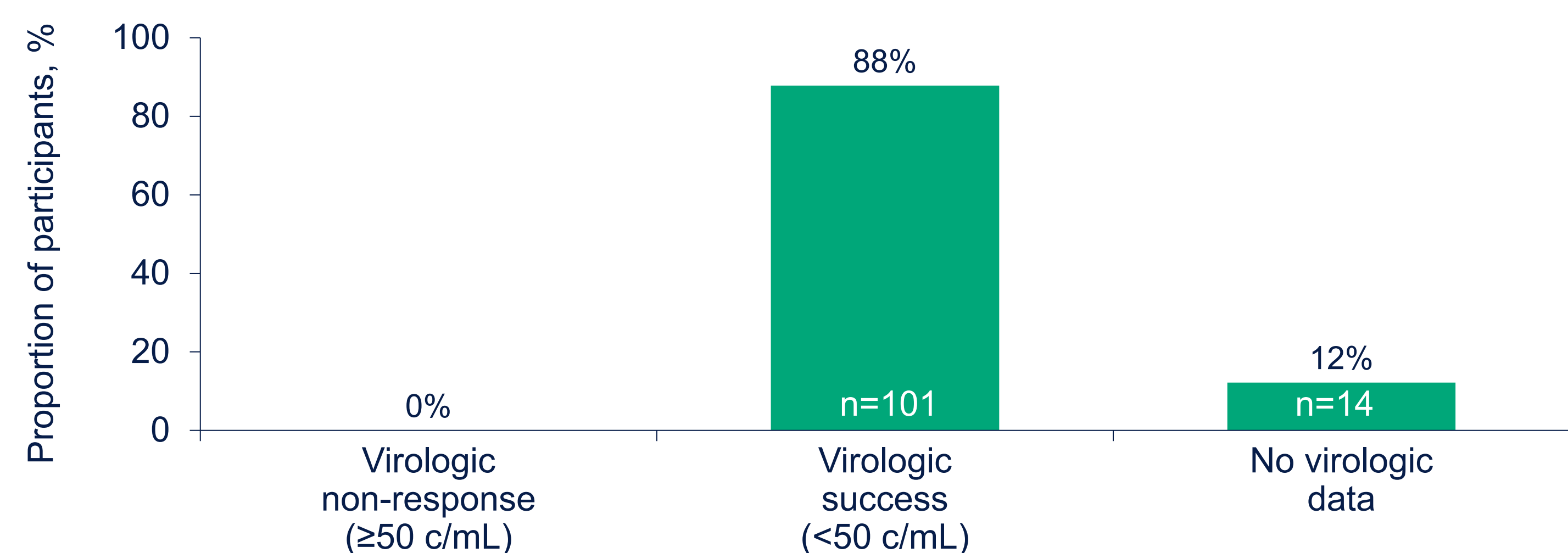
Parameter	CAB + RPV LA Q1M (N=115)
Age, mean (range), y	39 (20-65)
≥50, n (%)	27 (23)
Male, n (%)	99 (86)
Race and ethnicity, n (%)	
White	66 (57)
Black or African American	42 (37)
Hispanic or Latino	30 (26)
Body mass index, median (range), kg/m <sup>2</sup>	27 (17-55)

Q1M, every 1 month.

## Virologic Outcomes

- At Month 12, 88% (101/115) of participants maintained virologic suppression (HIV-1 RNA <50 c/mL), and no participants had HIV-1 RNA ≥50 c/mL (Figure 1)
  - 1 participant with missing data in the Month 12 window, due to COVID-19, maintained HIV-1 RNA <50 c/mL at all visits through Month 10 and remained undetectable at an unscheduled visit at Month 13
- No confirmed virologic failures (2 consecutive HIV-1 RNA measurements ≥200 c/mL) occurred through Month 12

Figure 1. Virologic Outcomes at Month 12 (FDA Snapshot Algorithm)



Outcome, n (%)	CAB + RPV LA Q1M (N=115)
HIV-1 RNA <50 c/mL	101 (88)
HIV-1 RNA ≥50 c/mL	0
No virologic data	14 (12)
Discontinued due to AE or death	5 (4) <sup>a</sup>
Discontinued for other reasons	8 (7) <sup>b</sup>
On study but missing data in window	1 (1) <sup>c</sup>

Q1M, every 1 month. <sup>a</sup>One death was reported due to diabetic ketoacidosis and drug abuse (both unrelated to study treatment). <sup>b</sup>Reasons include withdrawn consent (n=4), protocol deviation (n=3), and physician decision (n=1). <sup>c</sup>Due to COVID-19.

## Safety

- ISRs were the most common overall AE, reported in 72% (78/109) of participants who received ≥1 injection through Month 12; no grade 4 or 5 ISRs were reported (Table 2)
- Excluding ISRs, arthralgia (14%), diarrhea (14%), fatigue (12%), and headache (11%) were the most common AEs
- Drug-related AEs were reported in 59% (n=68) of participants, with the most common non-ISR drug-related AEs being fatigue (5%) and headache (5%)

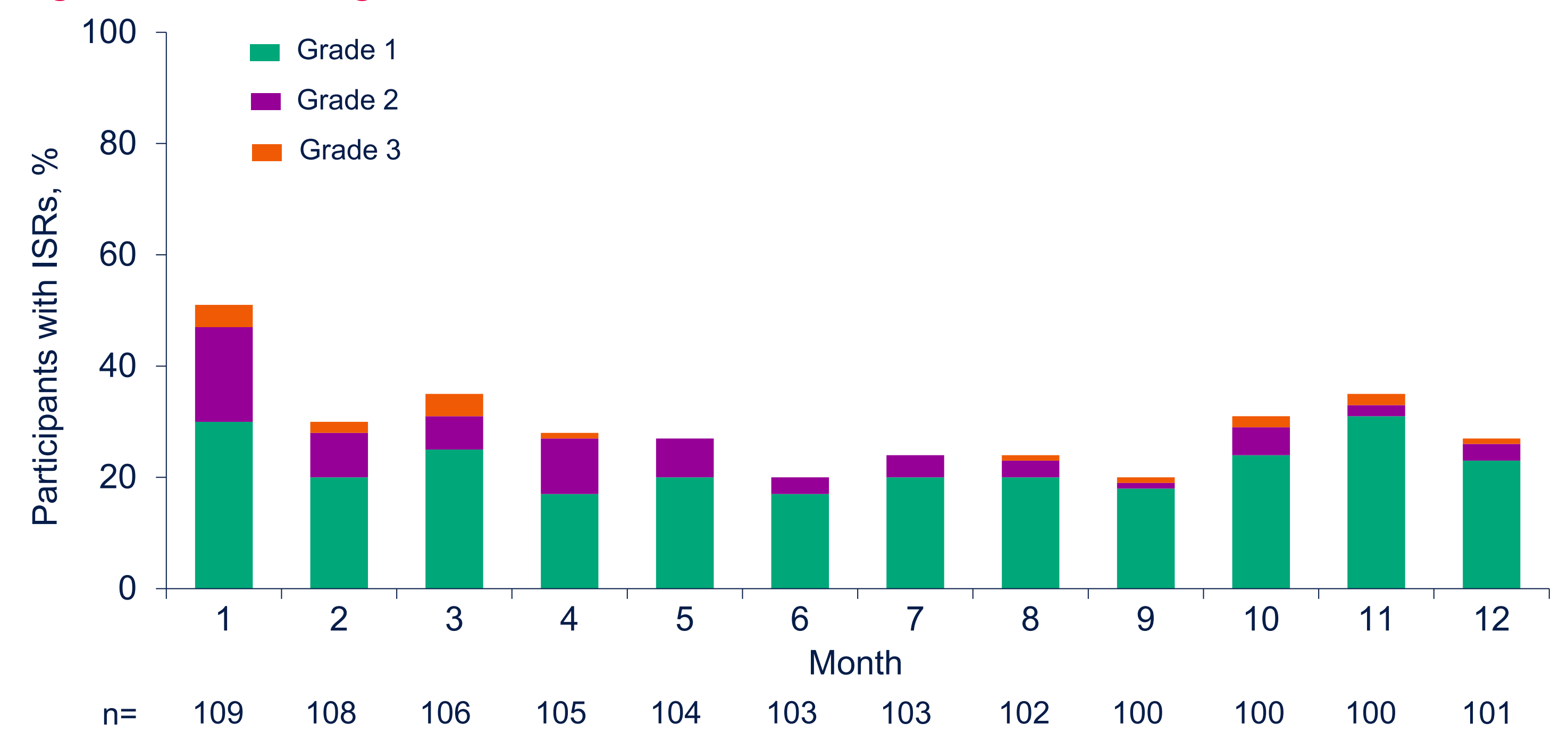
Table 2. Summary of AEs, Including ISRs

Event, n (%)	CAB + RPV LA Q1M (N=115)
Any AE	104 (90)
ISR events	78/109 (72) <sup>a</sup>
Grade ≥3 AEs	17 (15)
Drug-related AEs	68 (59)
Grade ≥3 drug-related AEs <sup>b</sup>	3 (3) <sup>c</sup>
Serious AEs	5 (4) <sup>d</sup>
AEs leading to withdrawal	6 (5) <sup>e</sup>

Q1M, every 1 month. <sup>a</sup>109 participants received ≥1 injection. <sup>b</sup>No grade 4 or 5 drug-related AEs were reported. <sup>c</sup>Injection site pain (n=2) and mental status changes (n=1). <sup>d</sup>5 participants reported 11 non-ISR serious AEs. <sup>e</sup>6 participants reported 14 events: injection site pain (n=2); arthralgia, back pain, diabetic ketoacidosis, diarrhea, drug abuse, insomnia, lipodystrophy, mental disorder, myalgia, nausea, psoriasis, and tendon pain (n=1 each).

- ISRs were reported in 718 of 2804 total injections and decreased in incidence after the first injection (Figure 2)
- Most ISRs were grade 1 (78%) or 2 (18%), with injection site pain being the most common (69%)
- Median duration of ISRs was 2 days, with 85% of ISRs resolving in <8 days
- 2 (2%) participants withdrew from the study because of injection site pain and injection intolerance after the first injection (n=1) or injection site pain after the sixth injection (n=1)

Figure 2. ISRs Through Month 12



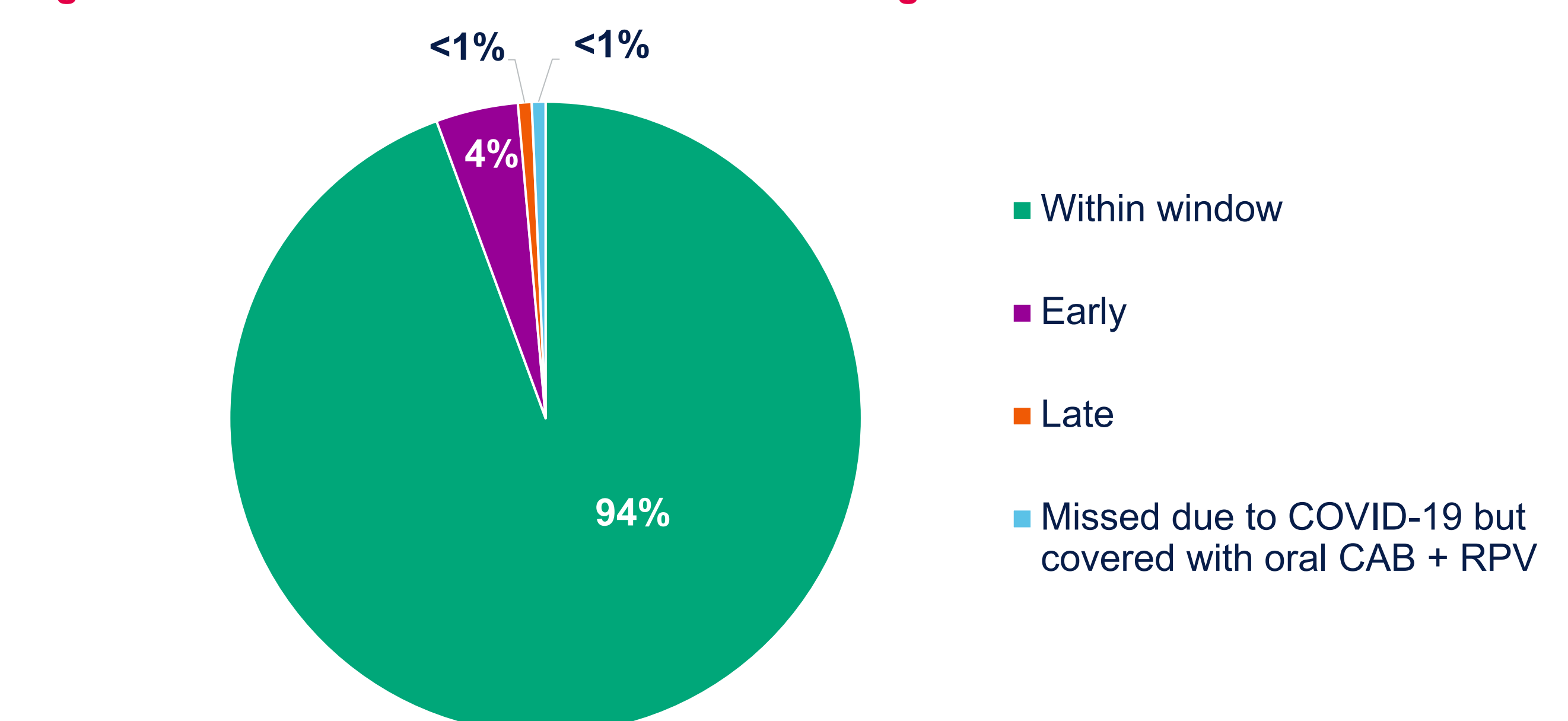
Event-level summary	CAB + RPV LA Q1M (N=109) <sup>a</sup>
Injections, n	2804
ISR event, n <sup>b</sup>	718
Pain, n (% of total injections)	494 (18)
Discomfort, n (% of total injections)	144 (5)
Grade 3 ISR, n (% of total injections) <sup>c</sup>	28 (1)
Median ISR duration, d	2
Participants withdrawing for injection-related reasons, n (%)	2 (2)

Q1M, every 1 month. <sup>a</sup>Participants receiving ≥1 injection. <sup>b</sup>Common ISRs reported in >1% of total injections. <sup>c</sup>No grade 4 or 5 ISRs were reported.

## Adherence to Treatment Window

- Through Month 12, 94% (1076/1140) of expected injection visits occurred within the ±7-day dosing window, and <1% (8/1140) of injection visits took place >7 days late (range, 8-11 days; Figure 3)
- 4% (48/1140) of injection visits occurred >7 days early, most (40/48) of which took place 8 to 14 days early relative to the target treatment date
- 8 (<1%) injection visits were missed because of COVID-19, all of which were covered with oral CAB + RPV and had no disruption to continuous ART

Figure 3. Adherence to Treatment Window Through Month 12



## Total Time Spent in Clinic

- Median (IQR) total time spent in clinic (wait time plus exam room time) for the first injection visit at Month 1 was 57 (47-70) minutes
- Subsequent injection-only visits were shorter, with median (IQR) total time spent in clinic of 35 (25-49) minutes at Month 5 and 34 (27-44) minutes at Month 11
- Median (IQR) exam room time decreased from 51 (42-65) minutes at Month 1 to 32 (26-41) minutes at Month 11

## Conclusions

- Monthly CAB + RPV LA was highly effective in a diverse US population, with no confirmed virologic failures occurring after 12 months of treatment
- Although ISRs were frequent, most (96%) were mild or moderate in severity, decreased after the first injection, and few participants (2%) withdrew for injection-related reasons
- Most injection visits (94%) occurred within the ±7-day dosing window through 12 months of treatment, with <1% of injection visits impacted by COVID-19
- Time spent in clinic for injection visits decreased after the first injection visit
- Clinical outcomes through 12 months in the CUSTOMIZE implementation-effectiveness study provide support for monthly CAB + RPV LA as an effective and well-tolerated treatment option that is preferred by people living with HIV-1<sup>4</sup>

## Acknowledgments

This study was funded by ViiV Healthcare. Editorial assistance and graphic design support for this poster were provided under the direction of the authors by MedThink SciCom and funded by ViiV Healthcare.

## References

- Cabenuva [prescribing information]. ViiV Healthcare; 2021.
- Vocabria [prescribing information]. ViiV Healthcare; 2021.
- Panel on Antiretroviral Guidelines for Adults and Adolescents. Available at <https://clinicalinfo.hiv.gov/sites/default/files/guidelines/documents/AdultandAdolescentGL.pdf>. Accessed June 16, 2021.
- Czarnogorski et al. IAS 2021; Virtual. Poster 881.



This content was acquired following an unsolicited medical information enquiry by a healthcare professional.

Always consult the product information for your country before prescribing a ViiV medicine. ViiV does not recommend the use of our medicines outside the terms of their licence.

In some cases, the scientific information requested and downloaded may relate to the use of our medicine(s) outside of their licence.