

CARAVEL: Evaluation of Real-World Effectiveness and Sustainability of the 2-Drug Regimen Dolutegravir/Lamivudine Fixed-Dose Combination in Treatment-Naive and Pre-Treated Adults Who Are Virologically Suppressed, in Routine Clinical Care, in France. Two-Year Interim Analysis Results

P. Philibert,¹ C. Charpentier,² N. Naguleswaran,³ C. Philippe,³ L. Roustand,⁴ C. Vouillot,⁵ L. Hocqueloux⁶

¹Hôpital Européen, Marseille, France; ²Hôpital Bichat-Claude Bernard, Paris, France; ³QUALEES, Paris, France; ⁴GSK, Rueil-Malmaison, France; ⁵ViiV Healthcare, Rueil-Malmaison, France; ⁶CHU, Orléans, France



Key Takeaways

- The effectiveness and sustainability of the 2-drug regimen dolutegravir/lamivudine fixed-dose combination (DTG/3TC) were described using data collected from routine clinical care in France
- These real-world data demonstrated high virological success after 2 years of follow-up, without significant weight change. The main reason for DTG/3TC discontinuation for both groups was patient request to switch to long-acting injectable cabotegravir + rilpivirine

Introduction

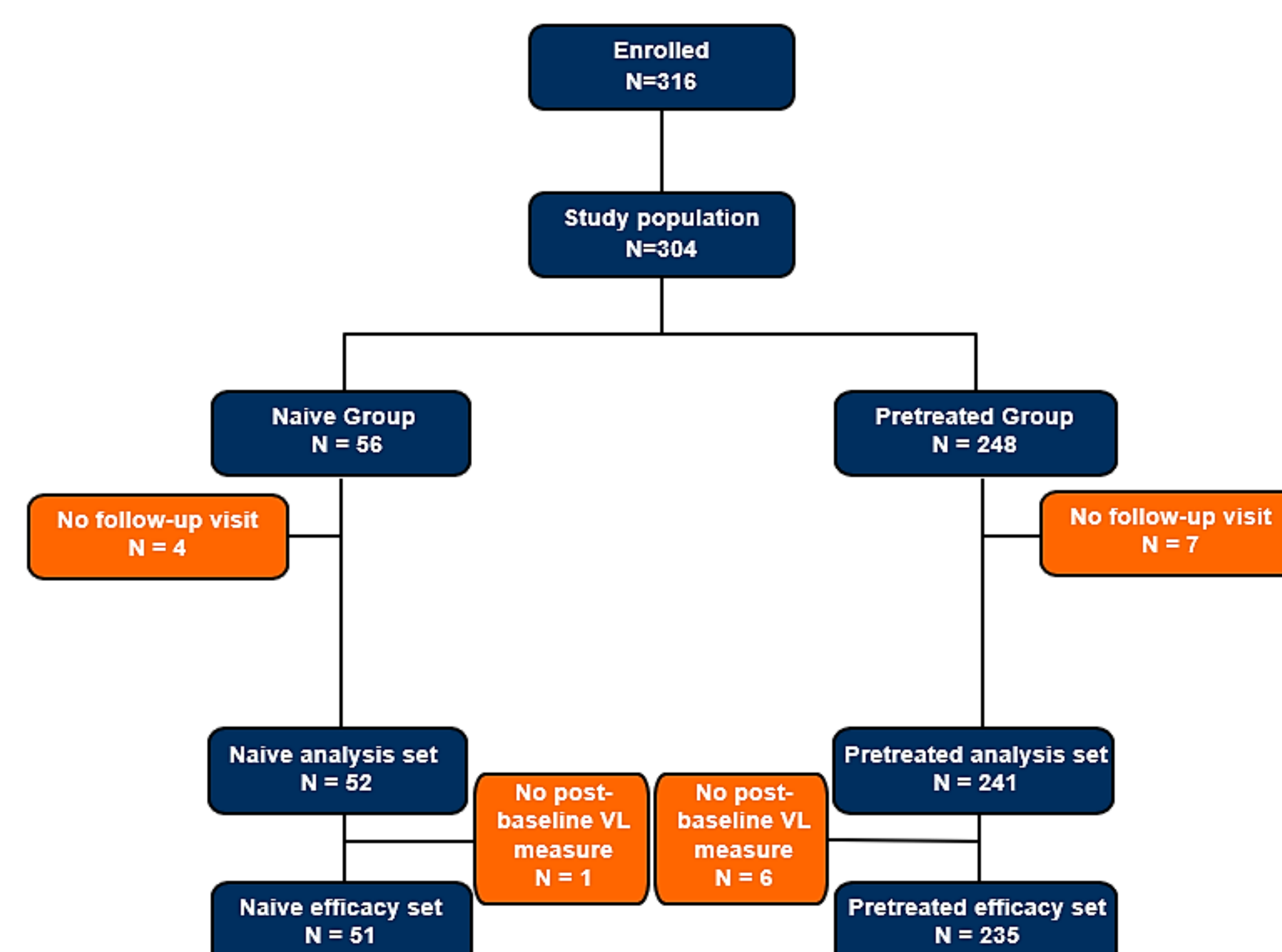
- 2-drug regimens have been developed to address problems of drug-drug interactions, resistance, and tolerance issues of existing ARVs
- Dolutegravir/Lamivudine (DTG/3TC) is a complete therapeutic regimen with just 2 active substances
- This study was conducted to supplement data gathered from clinical trials¹⁻³ with real-world evidence to evaluate the antiretroviral efficacy and safety of DTG/3TC in attaining or maintaining virological suppression in treatment-naive people living with HIV (TN-PLWH) and in pre-treated PLWH (PT-PLWH) in routine clinical care in France

Methods

- CARAVEL is a French, prospective, non-interventional, single-arm, multi-center cohort study with a planned 3-year follow-up
- Patients were stratified into 2 groups: TN-PLWH or PT-PLWH (Figure 1)
- To be included, adult PLWH should have started DTG/3TC for the first time in accordance with the summary of product characteristics
- Primary endpoint:
 - TN-PLWH: Number and percentage of patients who attain initial suppression (i.e., a viral load [VL] <50 c/mL after 6 months of initiation of DTG/3TC), and number and percentage of patients who maintain a viral load <50 c/mL from 6 months up to 3 years
 - PT-PLWH: Number and percentage of patients who maintain a viral load <50 c/mL after switch to DTG/3TC from 6 months up to 3 years
- Patients with no post-baseline VL measure were excluded from efficacy set
- Here, we present the 2-year interim analysis results

Figure 1. Study Flow Chart

French, prospective, non-interventional, single-arm, multi-center cohort study



Results

Patients

- 49 centers included 304 patients:
 - 56 TN-PLWH (mean age at baseline, 37 years; 84% men)
 - 248 PT-PLWH (mean age at baseline, 51 years; 75% men)

Effectiveness

- For the primary endpoint, 49 TN-PLWH and 234 PT-PLWH were evaluable
- Initial virological suppression (VL <50 c/mL) was attained for 44 (89.8%) TN-PLWH after 6 months of initiating DTG/3TC, with a median time to virological suppression of 1.1 month [1.0; 2.1] (Figure 2). All TN-PLWH (N=51) using DTG/3TC attained a virological suppression during the 2-year follow-up (maximum time to virological suppression: 12.4 months), and there were no TN-PLWH with virological failure (VF) during the 2-year follow-up
- 2 years after switch to DTG/3TC, 222 (94.8%) PT-PLWH maintained a VL<50 c/mL (Figure 3)
- During the follow-up, 12 PT-PLWH did not maintain a VL<50 c/mL:
 - 6 were due to intermittent viraemia (PLWH with VL <50 c/mL at most measurements, without 2 consecutive VL measurements ≥50 c/mL and without blip >200 c/mL)
 - 6 were due to VF, with a median time to VF of 9.6 months [7.2; 15.1]. Among these 6 patients with VF, a genotypic resistance test was available for 2 patients, of whom 1 developed 3TC resistance (M184V/I) due to non-adherence (declarative non-adherence; VL=387 c/mL); 4 of the 6 patients with VF discontinued DTG/3TC
- In patients who were evaluable, CD4+ cell count was ≥500 cells/mm³ at 2 years for 81.8% (N=18) of TN-PLWH vs 48.1% (N=26) at baseline and 81.0% (N=85) for PT-PLWH vs 79.1% (N=185) at baseline

Study treatment discontinuations and safety

- Overall, DTG/3TC was discontinued in 56 PLWH:
 - 7 TN-PLWH: 5 due to patient choice (71.4%) and 2 for safety reasons (28.6%)
 - 49 PT-PLWH: 31 due to patient choice (64.6%), 13 for safety reasons (27.1%), 4 for VF (8.3%), and 1 for data missing
- Safety cases leading to DTG/3TC discontinuation are presented in Table 1
- 19 PLWH who discontinued DTG/3TC were switched to long-acting injectable cabotegravir + rilpivirine (CAB/RPV-LA) and 6 to oral-form cabotegravir + rilpivirine (CAB/RPV-OF); all these switches were upon patient request

Body weight

- Median change in body weight over the first 2 years was 0.5 kg in TN-PLWH (IQR -2.0 to +2.0; N=33) and 0.0 kg in PT-PLWH (IQR -3.0 to +2.0; N=170). Table 2 presents changes in body weight

Figure 2. Kaplan-Meier of the Time to Virological Suppression for TN-PLWH

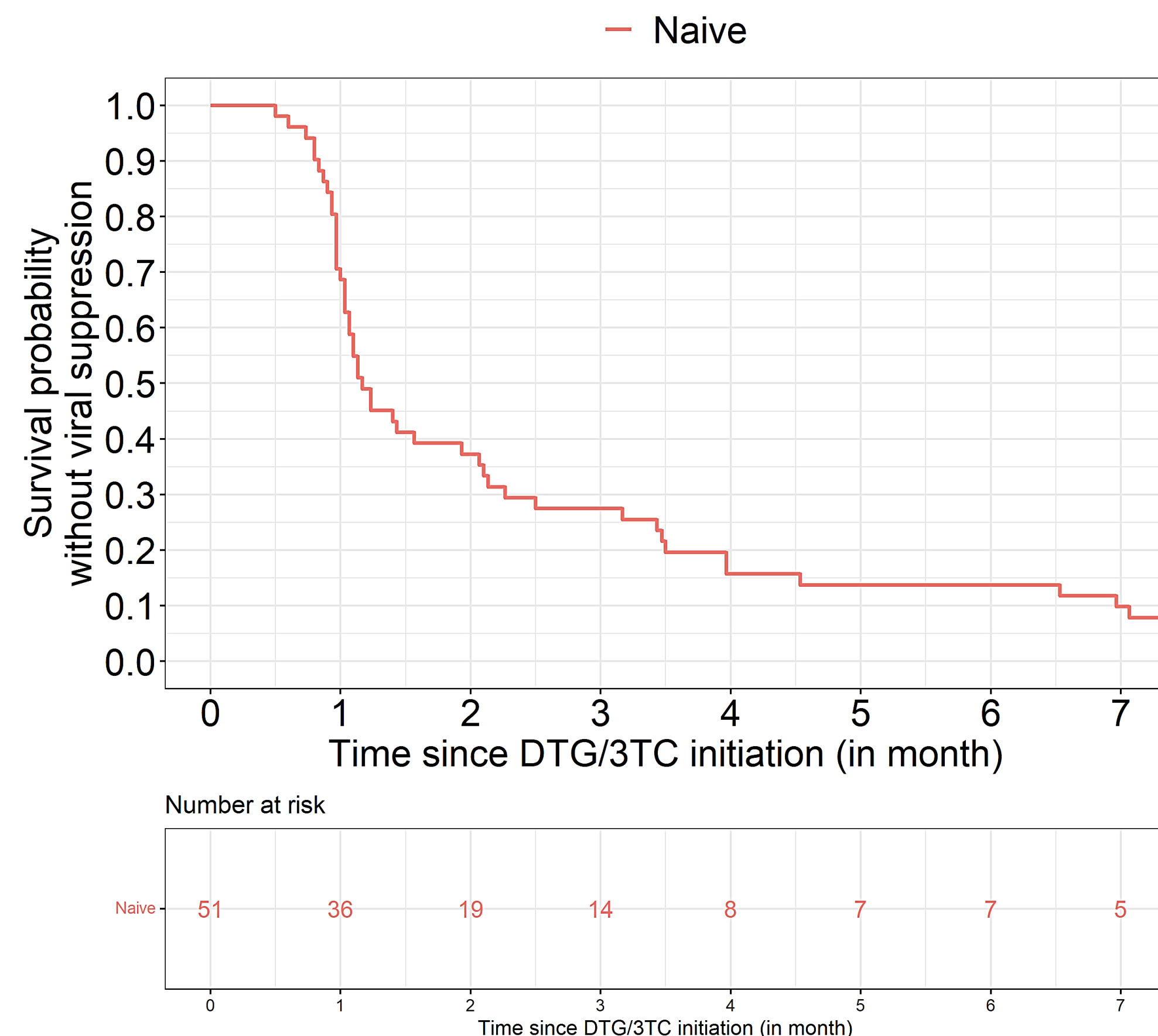


Figure 3. Kaplan-Meier of Virological Failure for PT-PLWH

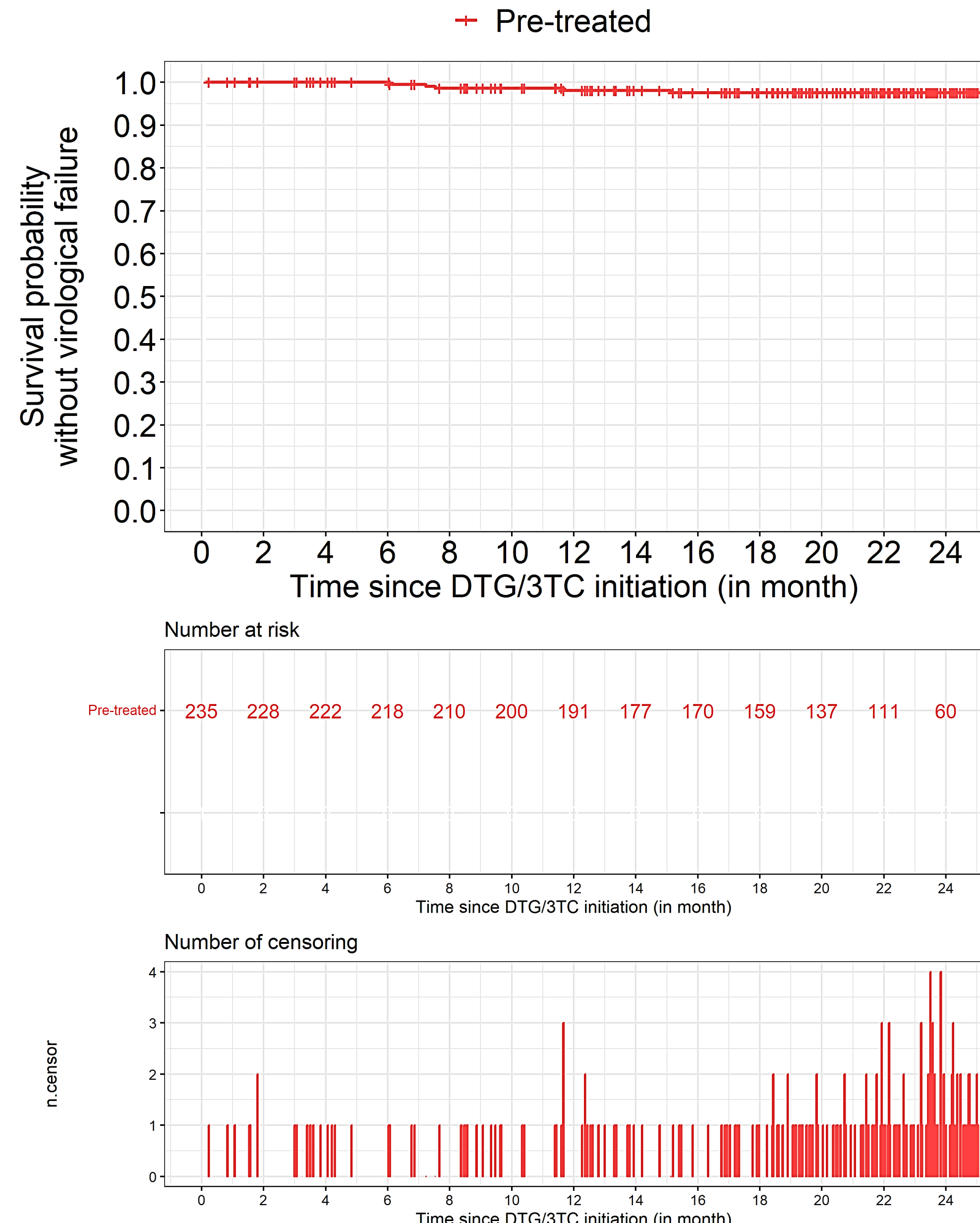


Table 1. Safety Cases Leading to DTG/3TC Discontinuation for TN-PLWH and PT-PLWH

Adverse events (AEs)*	TN-PLWH (N=56)	PT-PLWH (N=248)
Musculoskeletal and connective tissue disorders	0	7 (2.8%)
General disorders and administration site conditions	0	5 (2.0%)
Nervous system disorders	1 (1.8%)	5 (2.0%)
Investigations	1 (1.8%)	4 (1.6%)
Psychiatric disorders	0	4 (1.6%)
Gastrointestinal disorders	1 (1.8%)	3 (1.2%)
Hepatobiliary disorders	0	3 (1.2%)
Infections and infestations	0	3 (1.2%)
Injury, poisoning, and procedural complications	0	3 (1.2%)
Metabolism and nutrition disorders	1 (1.8%)	3 (1.2%)
Vascular disorders	0	2 (0.8%)
Ear and labyrinth disorders	0	1 (0.4%)
Neoplasms benign, malignant, and unspecified (including cysts and polyps)	0	1 (0.4%)
Skin and subcutaneous tissue disorders	0	1 (0.4%)
Social circumstances	0	1 (0.4%)

*MedDRA classification.

Table 2. Change in Body Weight

Change in body weight between last weight (more than 18 months) and baseline weight (in kg)	TN-PLWH (N=33)	PT-PLWH (N=170)
Missing value	9	23
N	24	147
Mean (±SD)	-0.1 (±4.0)	0.0 (±5.7)
Median [Q1-Q3]	0.5 [-2.0; 2.0]	0.0 [-3.0; 2.0]
Range	-10.0 / 6.0	-17.0 / 26.0

Conclusions

- Based on 2-year follow-up analysis results, DTG/3TC demonstrated virological efficacy in both TN-PLWH and PT-PLWH in routine clinical care
- There were no VFs in TN-PLWH and only 6 in PT-PLWH during the 2-year follow-up
- DTG/3TC was discontinued in 56 PLWH; most discontinuations were due to patient choice to switch to CAB/RPV-LA
- In patients who were evaluable during the 2-year follow-up, DTG/3TC had no significant impact on body weight
- These real-world data demonstrated high virological success after 2 years on DTG/3TC in both TN-PLWH and PT-PLWH populations, without significant weight change. The main reason for DTG/3TC discontinuation was due to patient request to switch to CAB/RPV-LA

This content was acquired following an unsolicited medical information enquiry by a healthcare professional. Always consult the product information for your country, before prescribing a ViiV medicine. ViiV does not recommend the use of our medicines outside the terms of their licence. In some cases, the scientific Information requested and downloaded may relate to the use of our medicine(s) outside of their license.